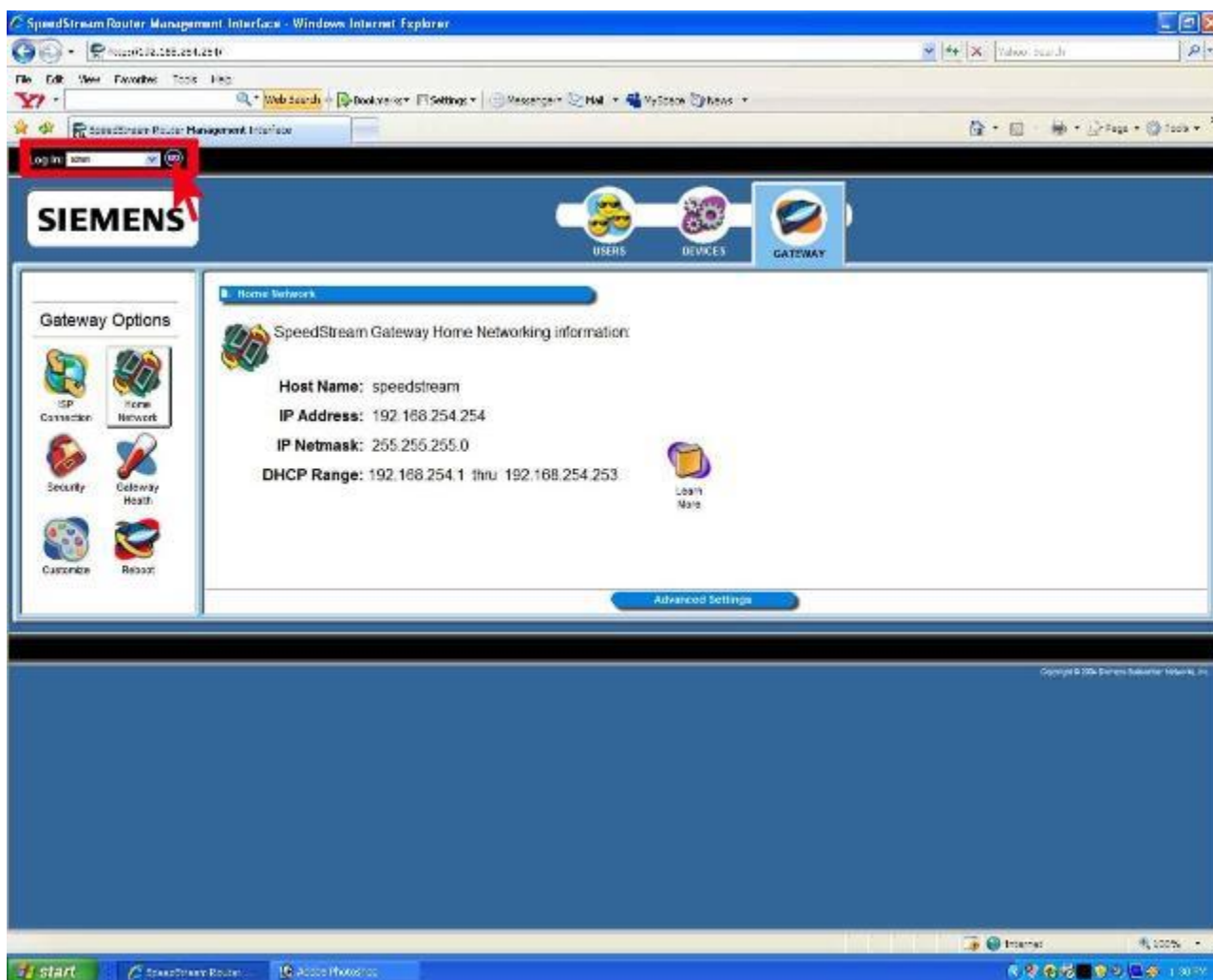


How to configure wireless on Siemens SpeedStream 6520?

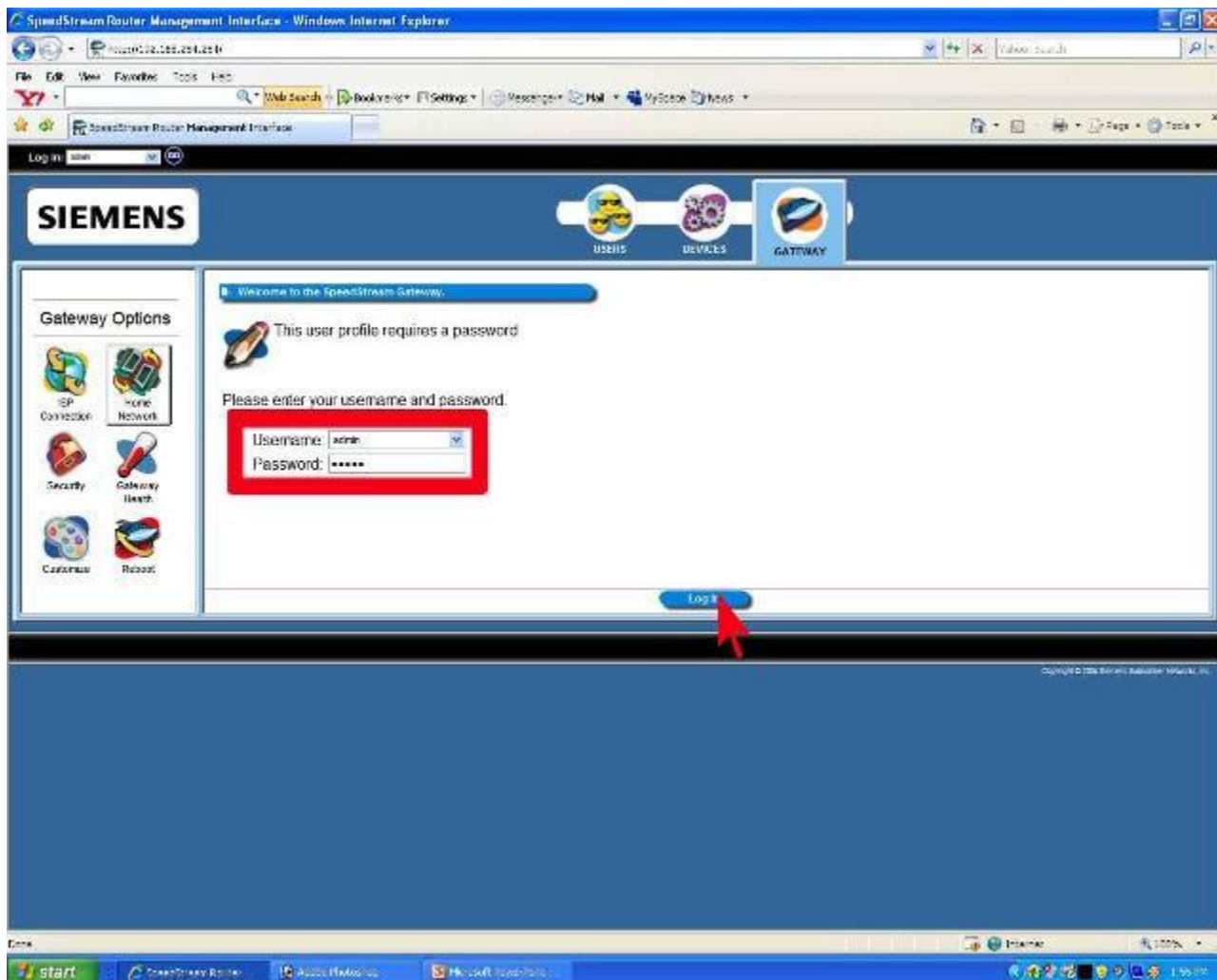
How to configure wireless on Siemens SE568?

Siemens SE568/6520

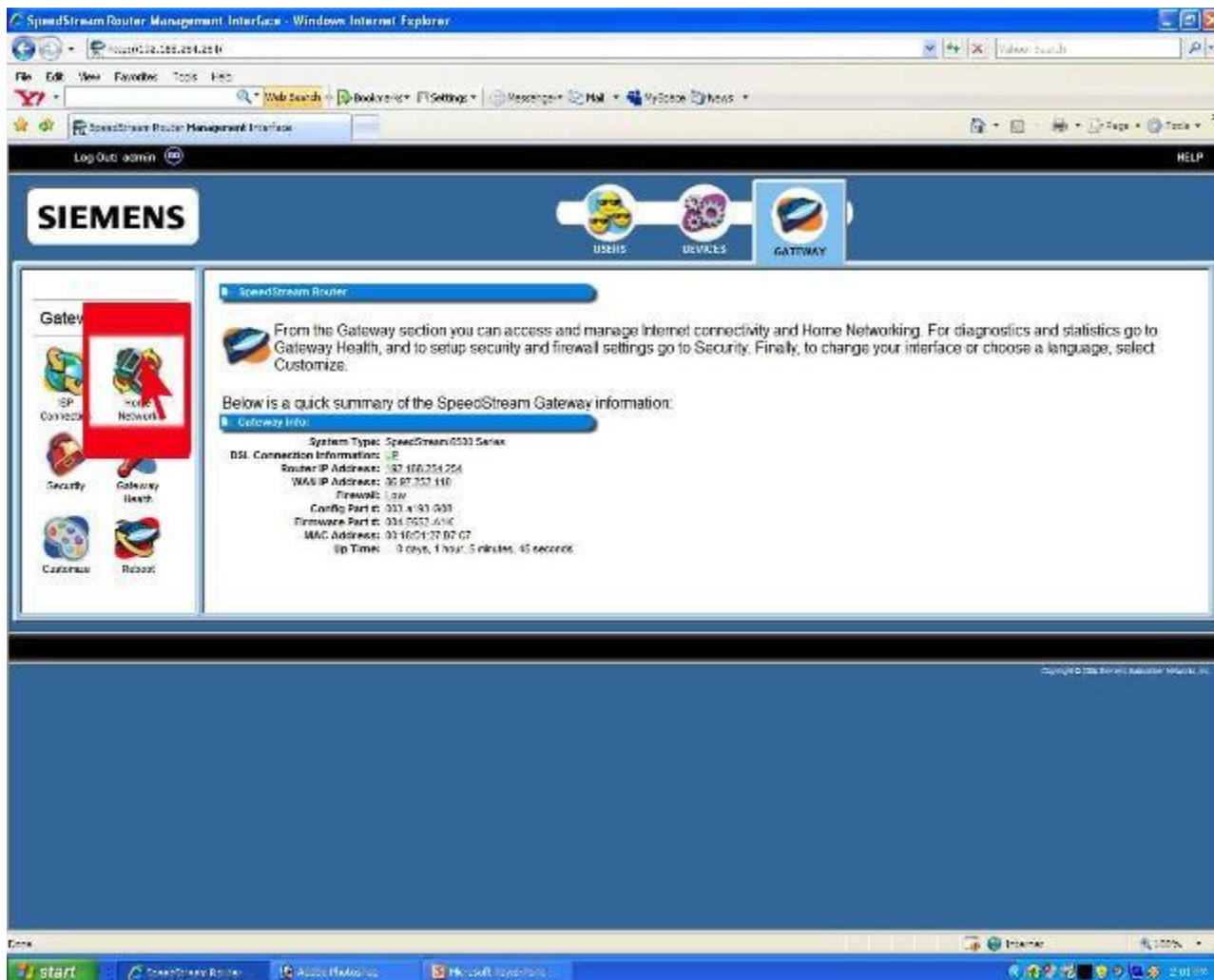
1. First connect the network cable from LAN port on the Siemens router to NIC on the computer and make sure that the LAN card is enabled and connected with LAN IP.
2. Go to the router page 192.168.254.254.
3. Click on 'GO' button on the top left to log in as Administrator.



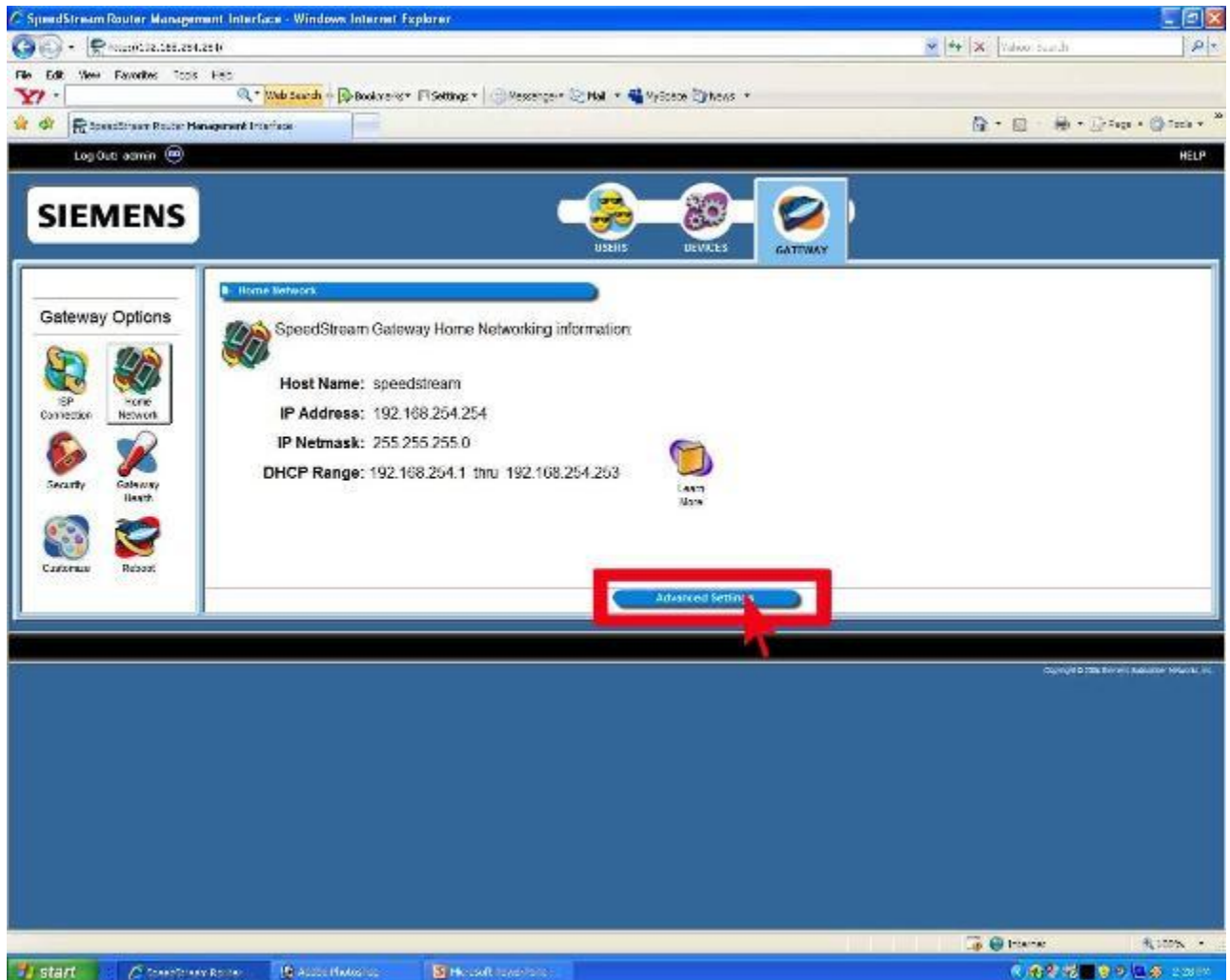
4. Enter the password as 'admin' & click 'Log In'.



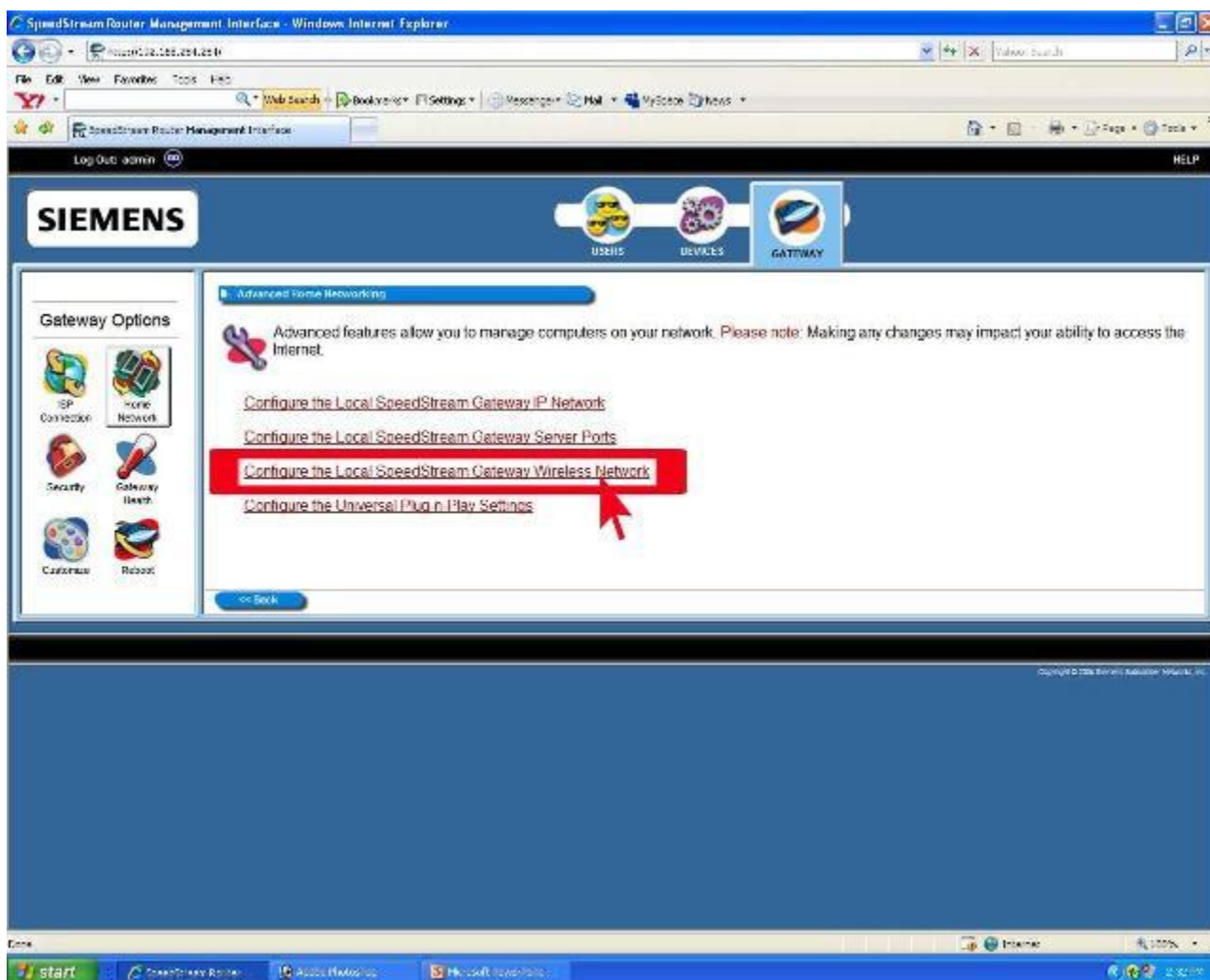
5. Click on 'Home Network'.



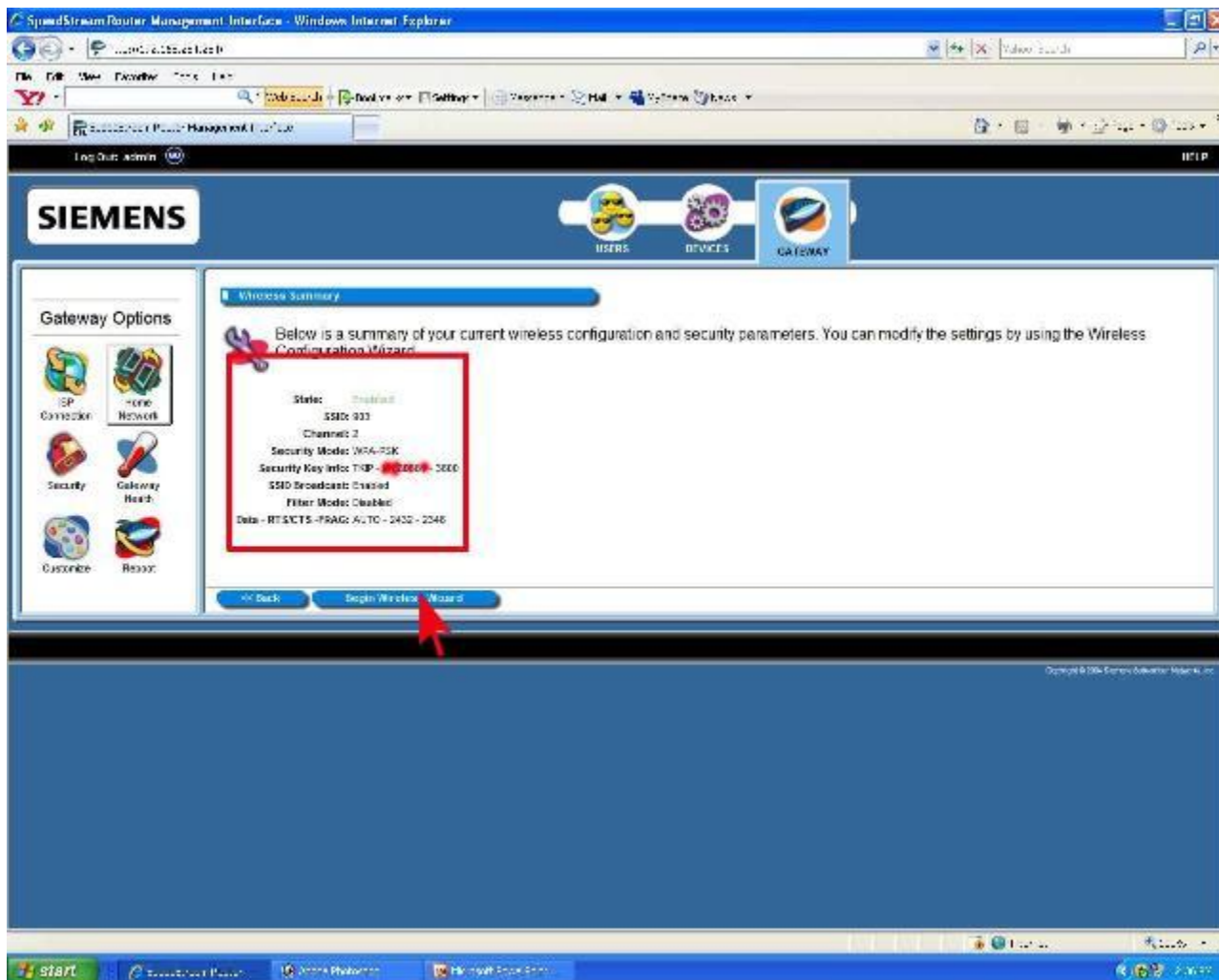
6. Click on 'Advanced Settings'.



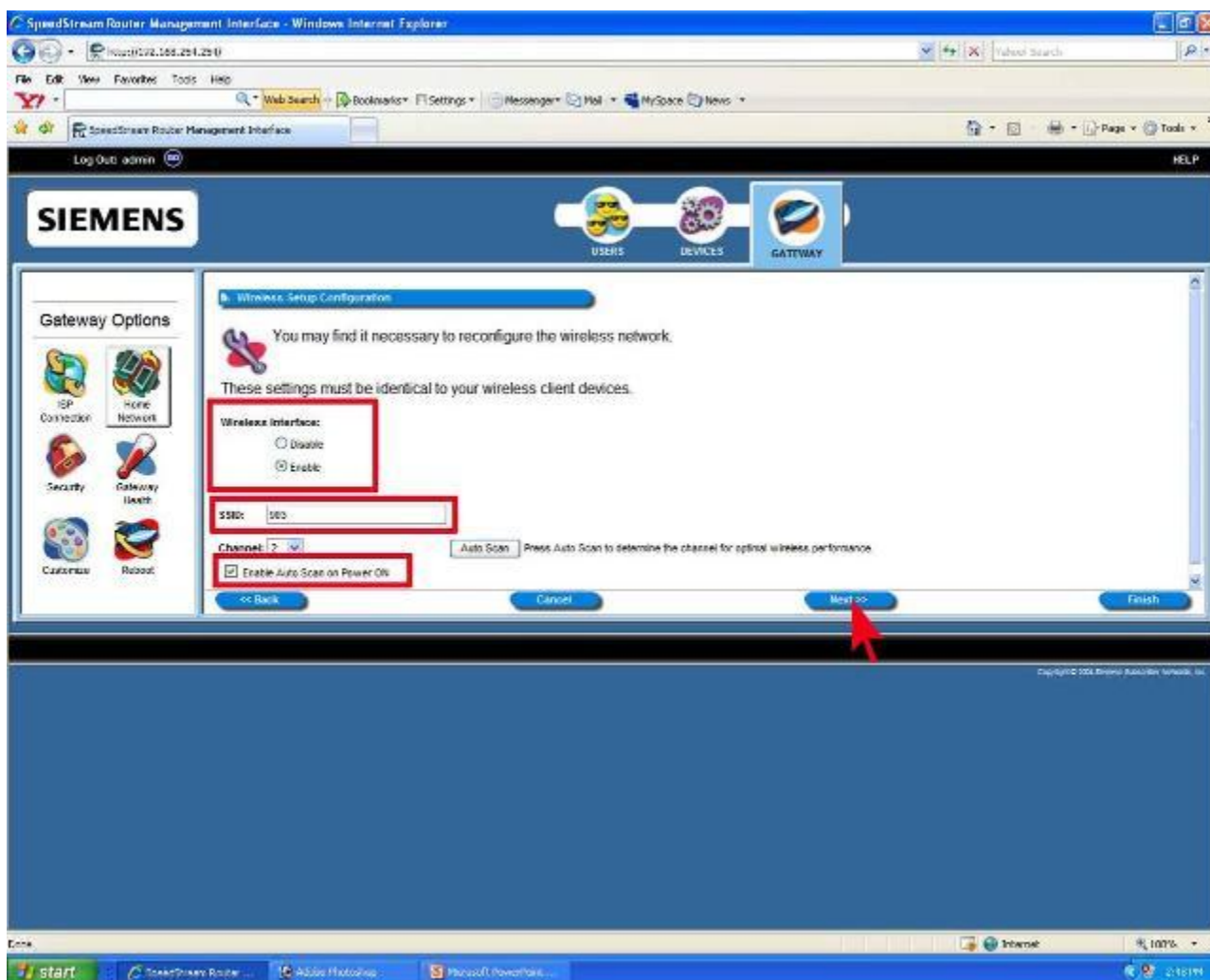
7. Click on 'Configure the Local SpeedStream Gateway Wireless Network' to go to wireless settings.



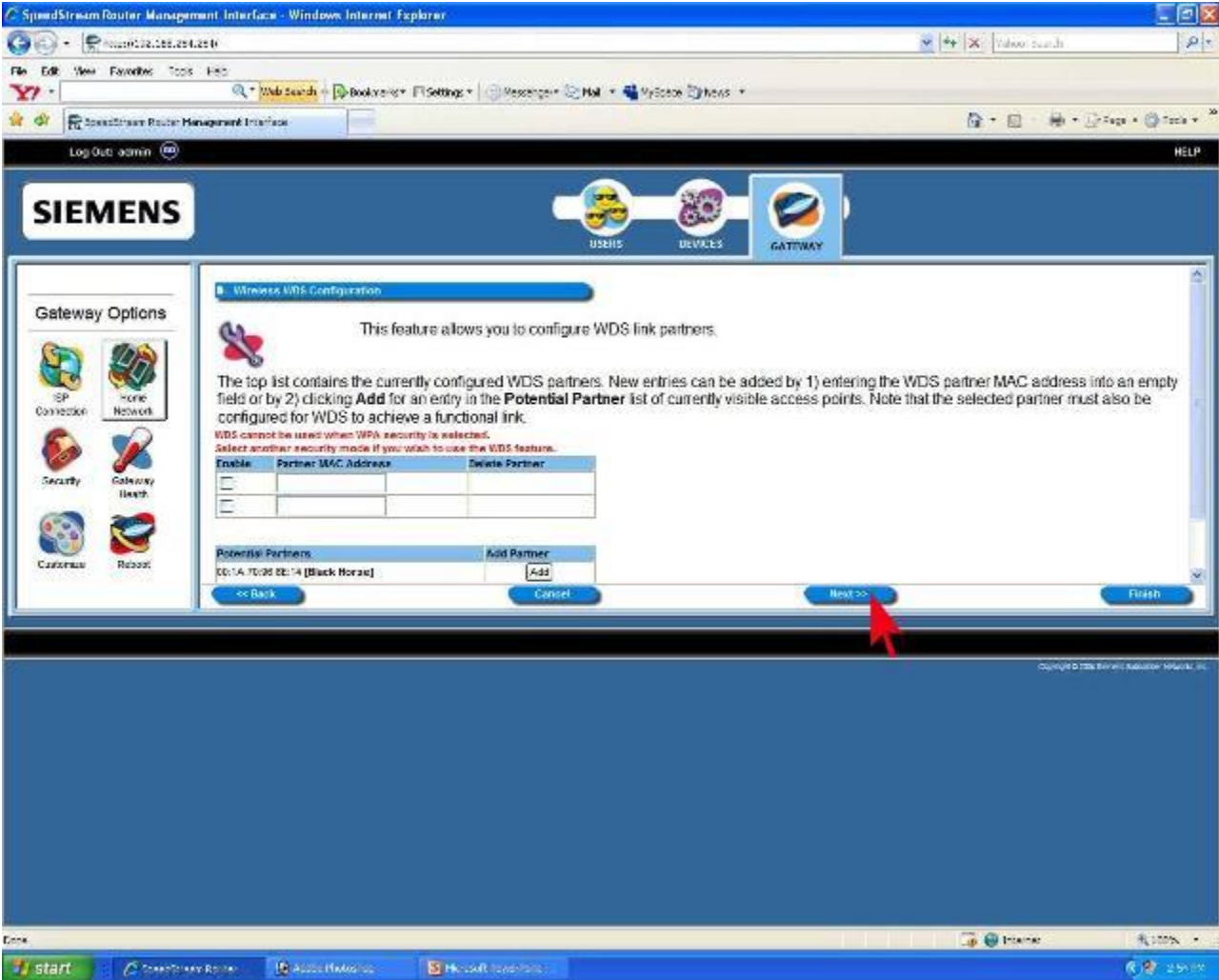
- Click on 'Begin Wireless Wizard' to start the wireless configuration.



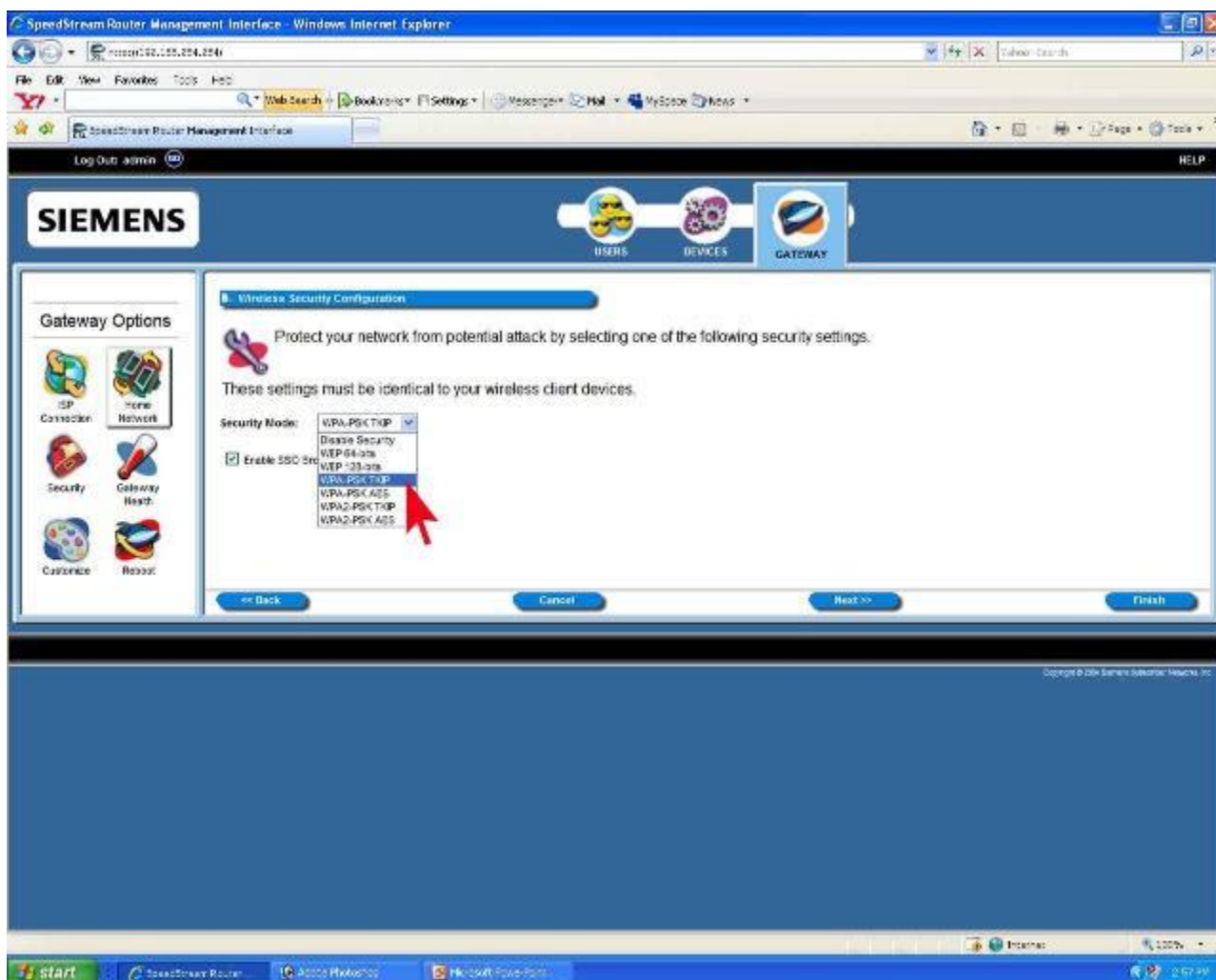
9. Select 'Enable' under the 'Wireless Interface'.
10. Enter any name in 'SSID' (This will be name of the wireless network).
11. Select 'Enable Auto Scan on Power On'.



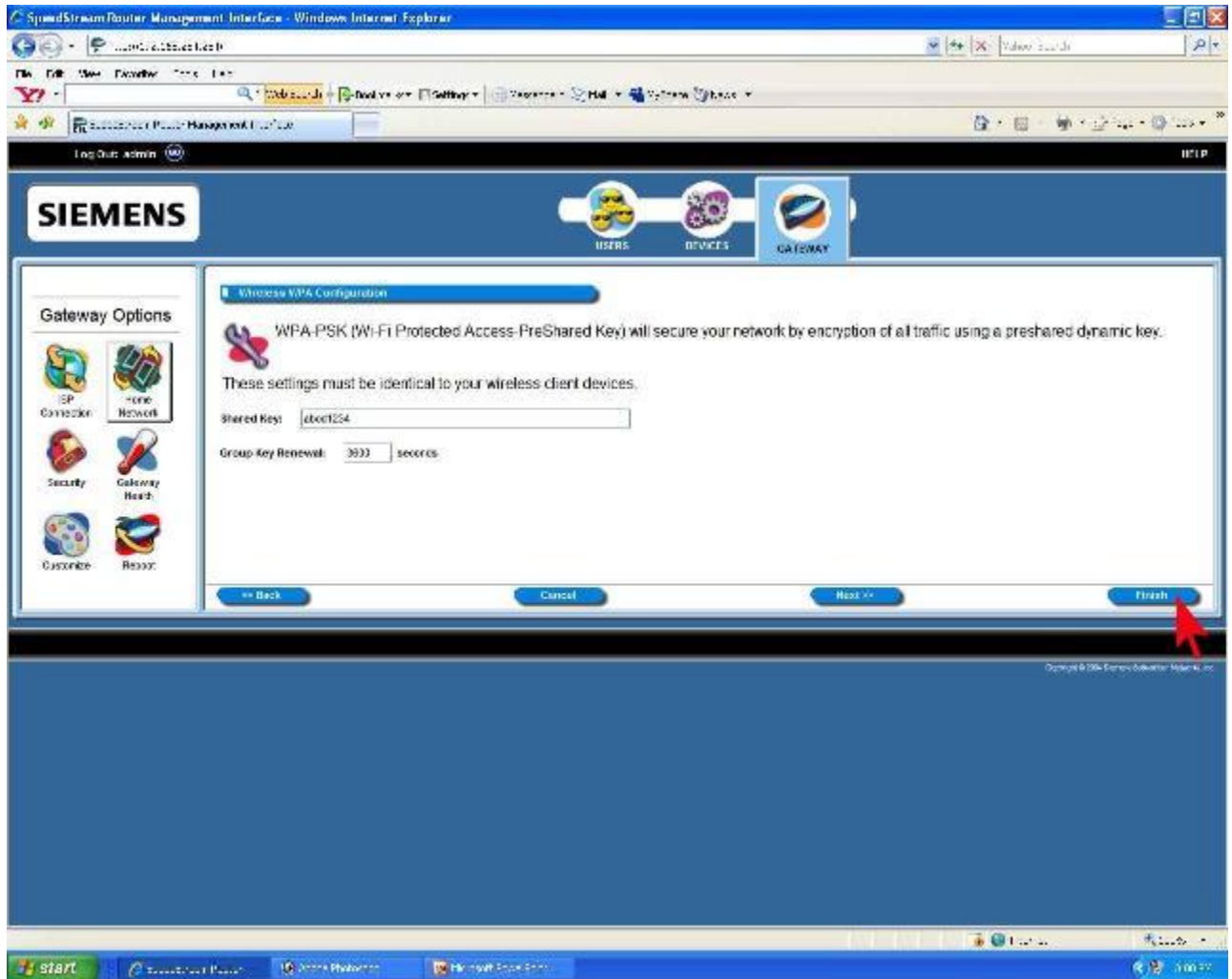
12. Click 'Next'.



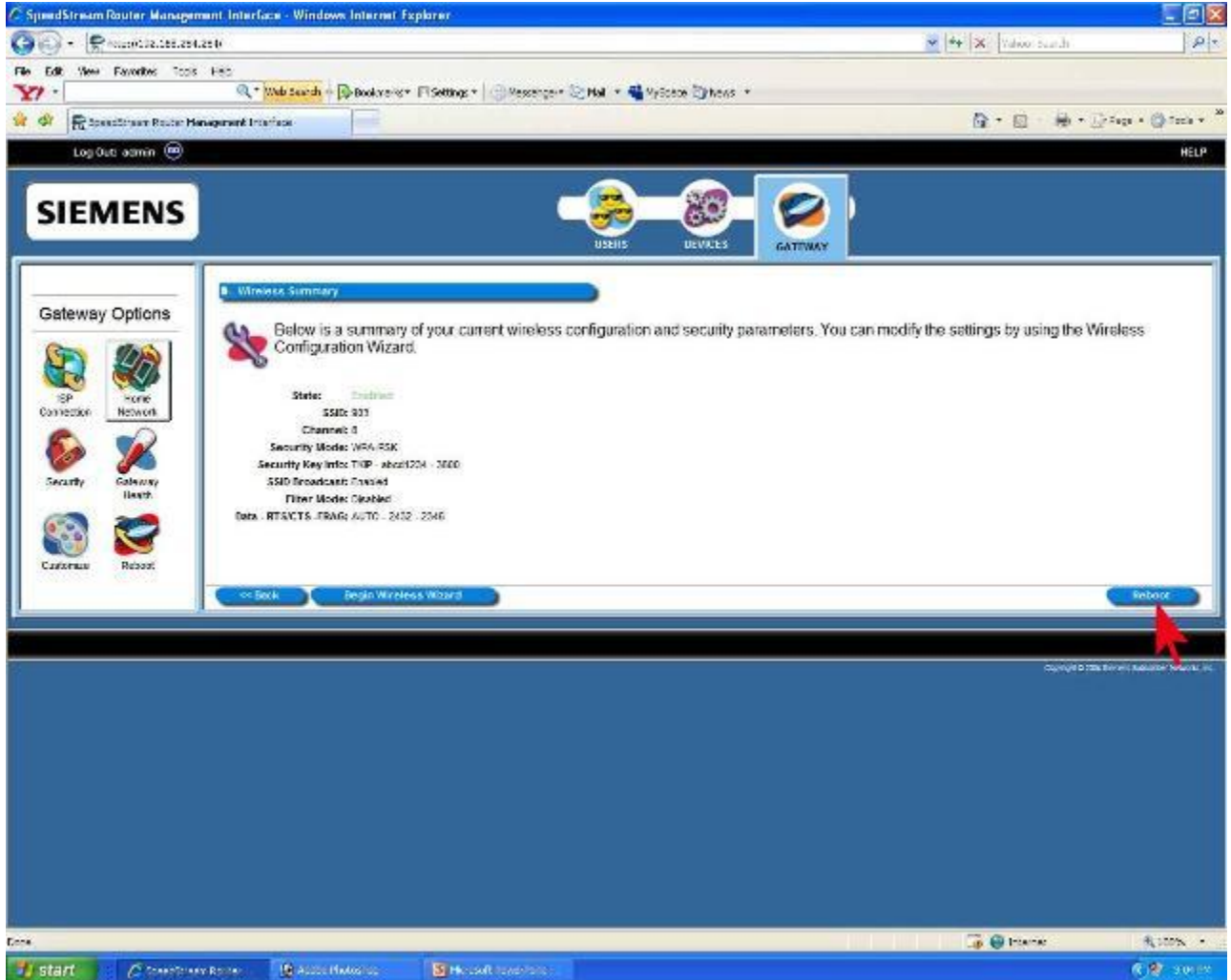
13. Select the 'Security Mode' as 'WPA-PSK TKIP'.
14. Select 'Enable SSID Broadcast'.
15. Click 'Next'.



16. Enter the password in the 'Shared Key' field. (at least 8 characters long).
17. Click on 'Finish'.



18. Click on 'Reboot'.



The screenshot displays the Siemens SpeedStream Router Management Interface in a Windows Internet Explorer browser window. The page title is "SpeedStream Router Management Interface - Windows Internet Explorer". The address bar shows "http://192.168.1.254". The interface features a blue header with the Siemens logo and navigation tabs for "USBS", "DEVICES", and "GATEWAY". A "Log Out: admin" link is visible in the top left, and a "HELP" link is in the top right. The main content area is titled "Wireless Summary" and contains the following text: "Below is a summary of your current wireless configuration and security parameters. You can modify the settings by using the Wireless Configuration Wizard." The configuration details listed are: State: Disabled, SSID: 931, Channel: 8, Security Mode: WPA-PSK, Security Key Info: TYP - abc1234 - 3200, SSID Broadcast: Disabled, Filter Mode: Disabled, and Data - RTACTS - FRAG - AUTO - 2432 - 2546. On the left side, there is a "Gateway Options" section with icons for "ISP Connection", "Home Network", "Security", "Gateway Health", "Customize", and "Reboot". At the bottom of the main content area, there are buttons for "< Back", "Begin Wireless Wizard", and "Reboot". A red arrow points to the "Reboot" button. The Windows taskbar at the bottom shows the Start button, several open applications, and the system tray with the date and time (3/10/07).

19. Click again on 'Reboot' to restart the router.

