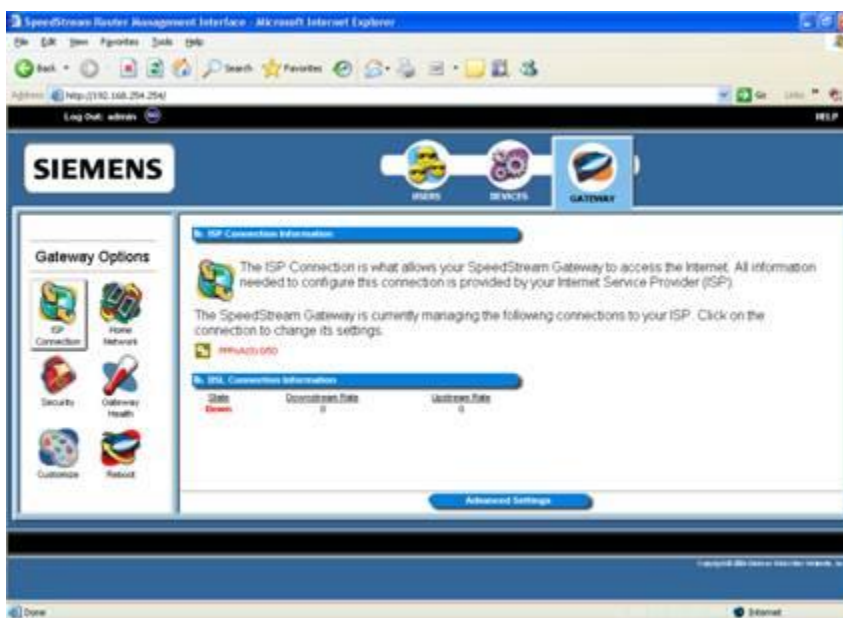


Contents

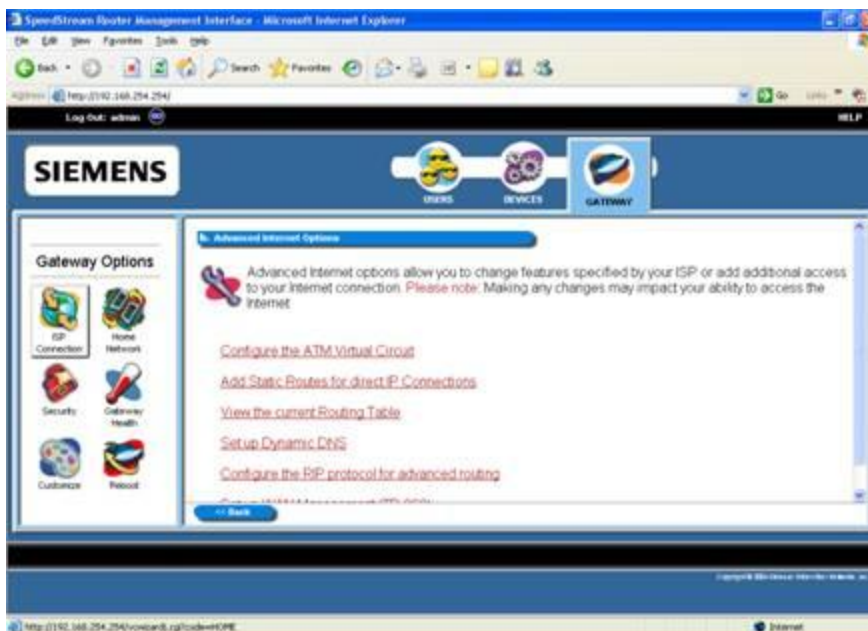
Siemens SE568/ SpeedStream 6520 (ADSL Network).....	2
Siemens SE568/ SpeedStream 6520 (GPON Network)	12

Siemens SE568/ SpeedStream 6520 (ADSL Network)

1. Go to ISP connection click on Advanced Settings



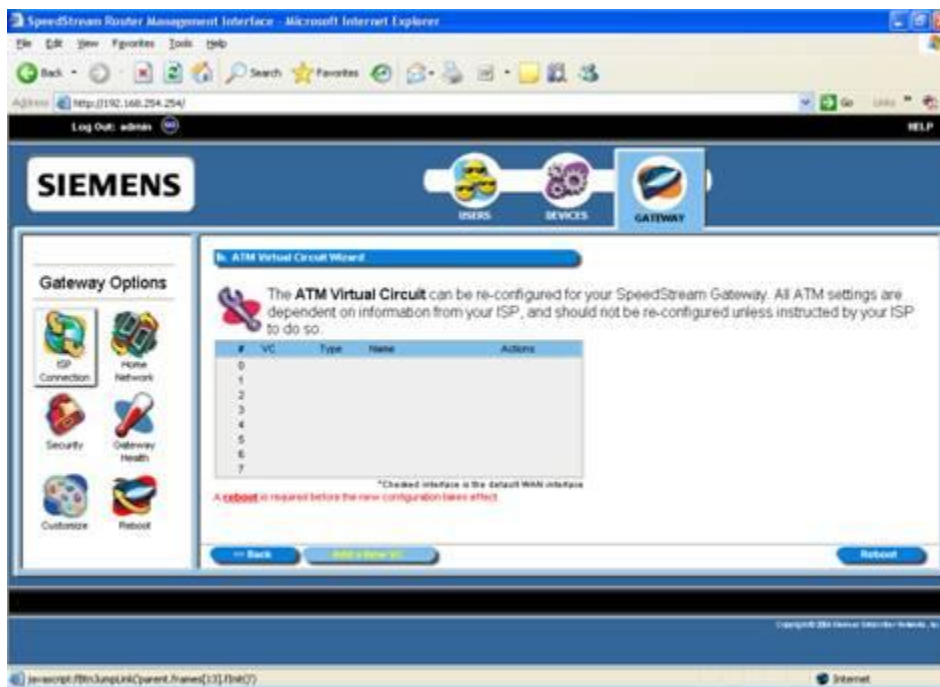
2. Click on Configure the ATM Virtual Circuit



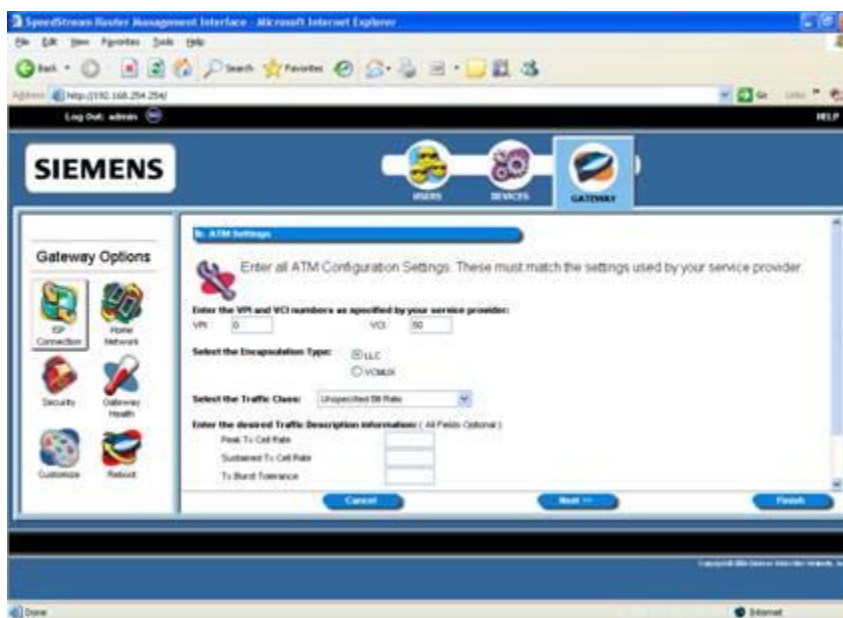
3. The following screen will show up



4. Click "Delete" to remove the PPPoA connection.

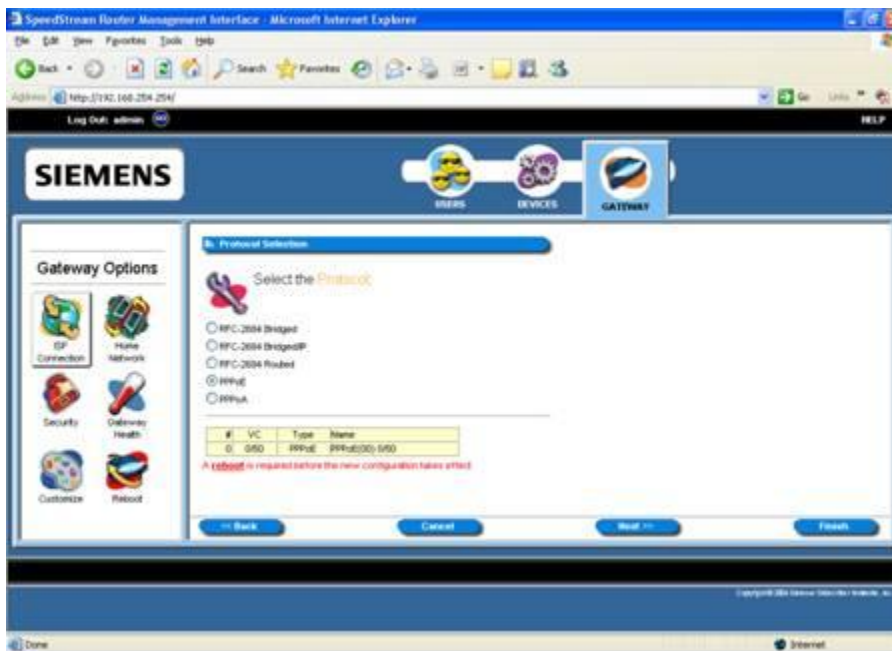


5. Now click on 'Add a New VC'.
6. Enter VPI=0 & VCI=50.
7. Select Encapsulation as LLC.
8. Click Next.



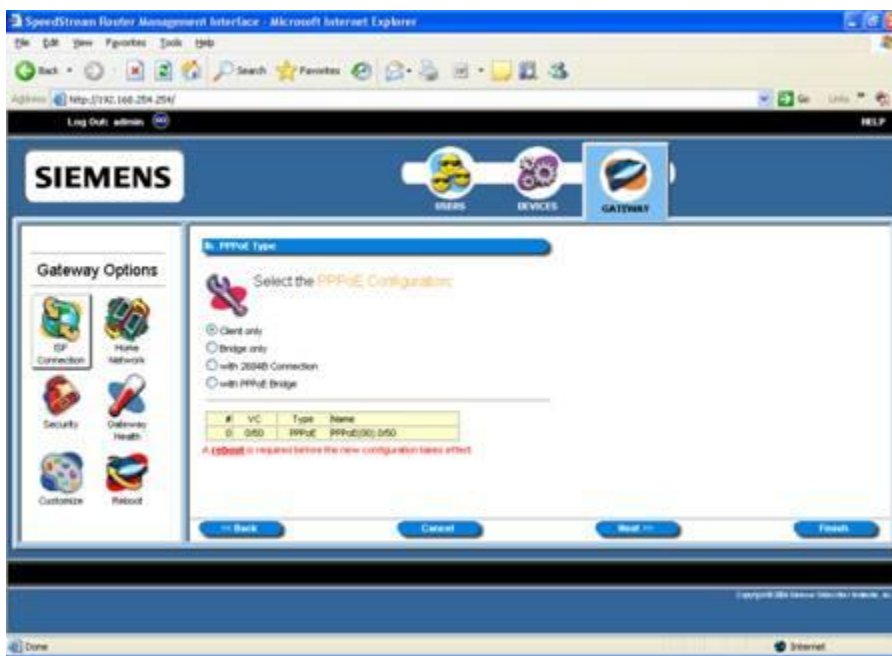
9. Select PPPoE or PPPoA (Depending on your connection type).

10. Click Next.

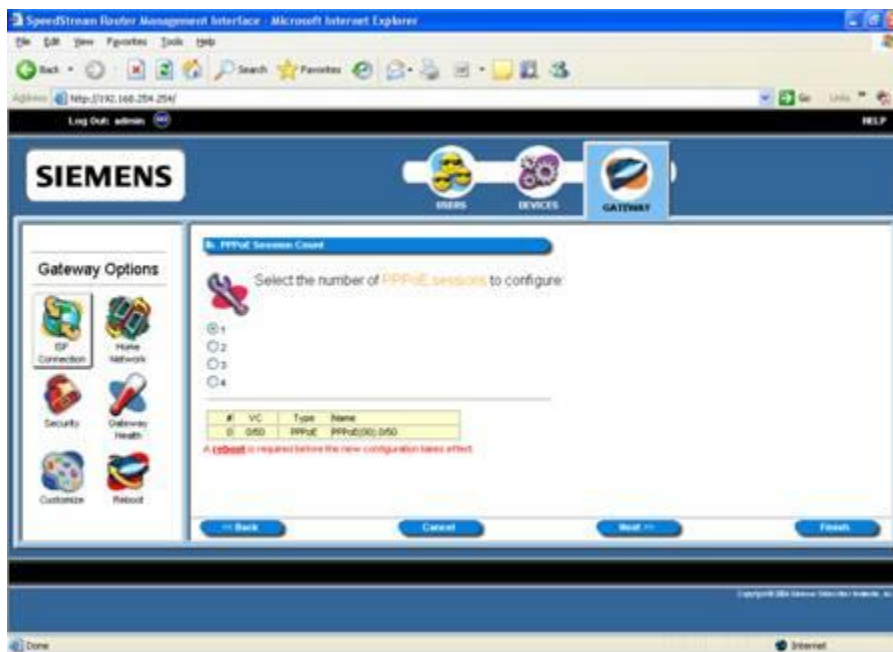


11. Select 'Client Only'.

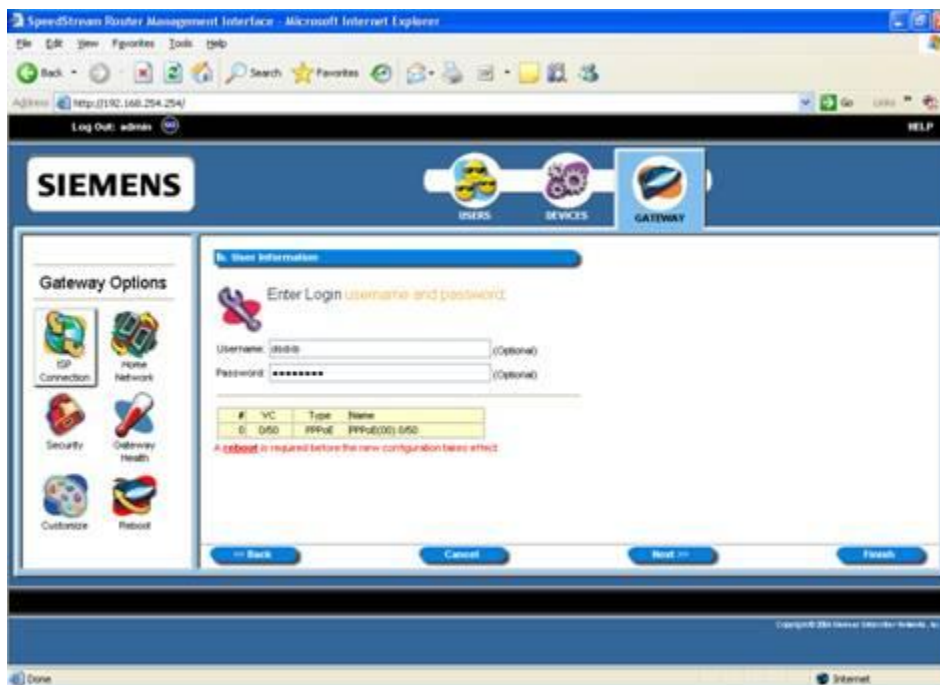
12. Click Next.



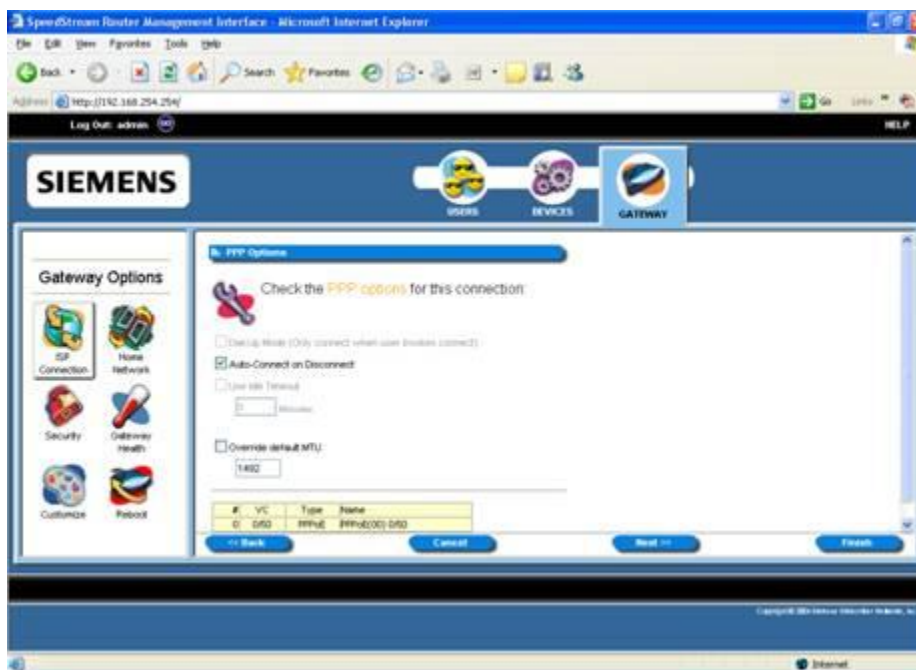
13. Select '1'.
14. Click Next.



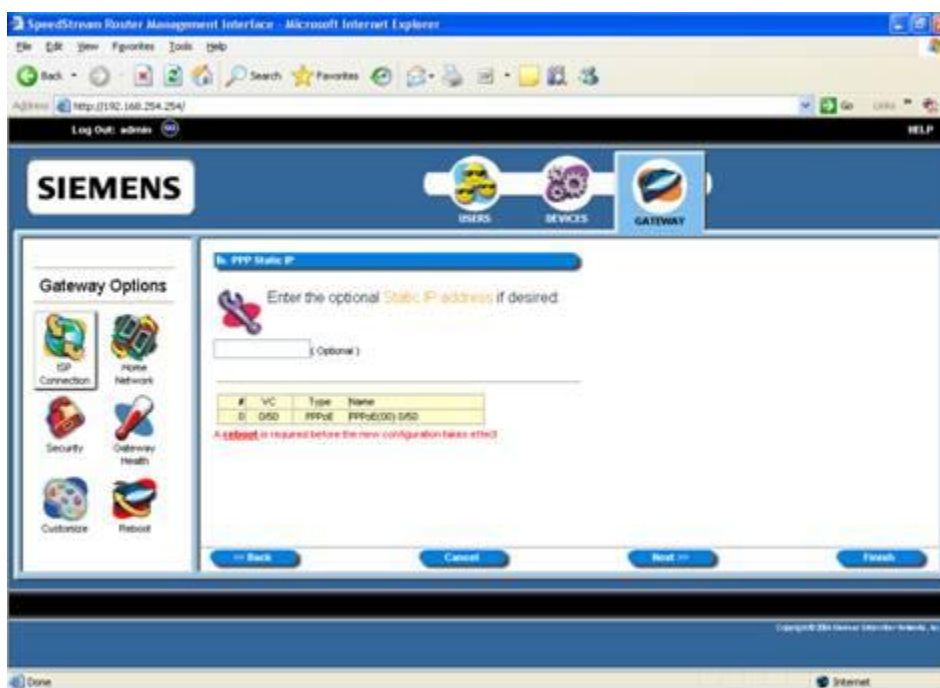
15. Enter the internet User name & password.
16. Click Next.



17. Select 'Auto Connect on Disconnect'.
18. Click Next.

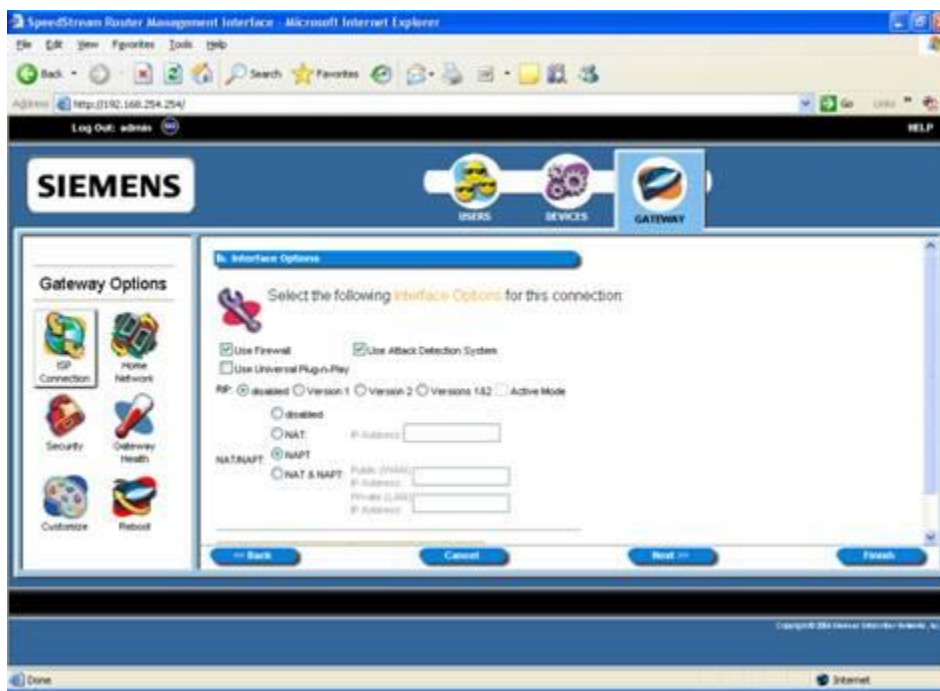


19. Click Next.

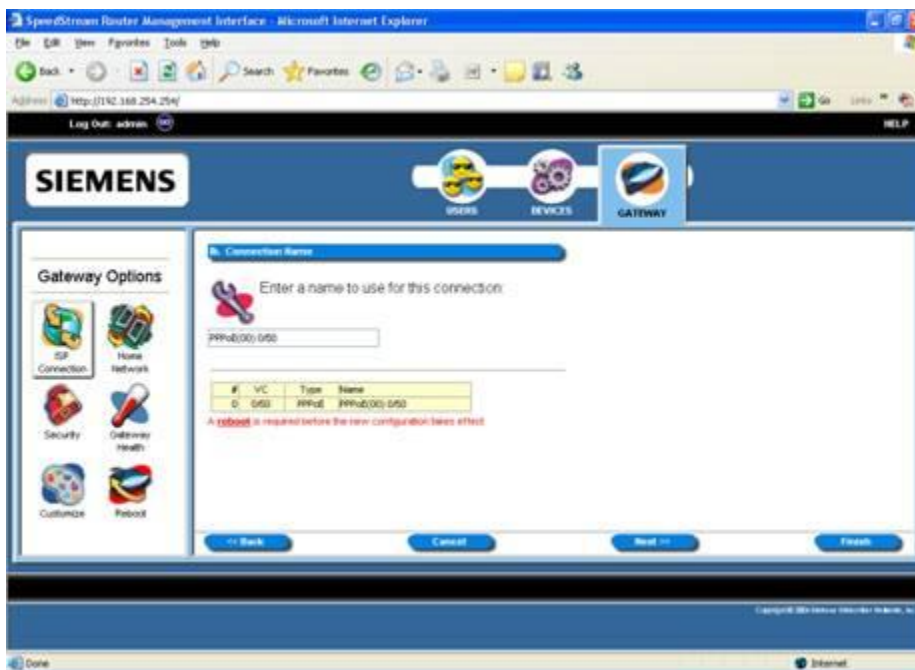


20. Uncheck 'Use Firewall'.
21. Select 'Use Universal Plug-n-Play'.

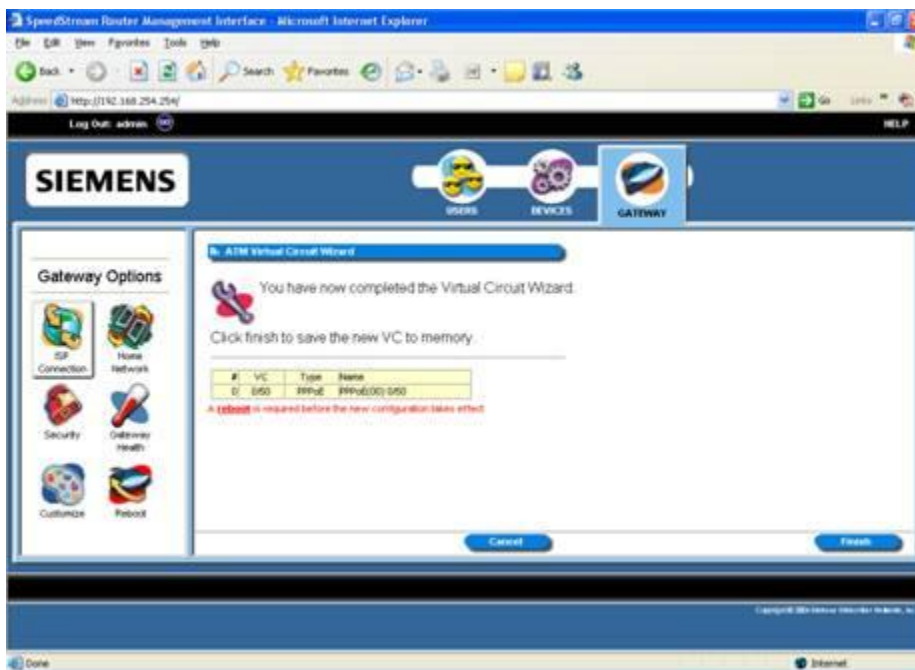
22. Click Next.



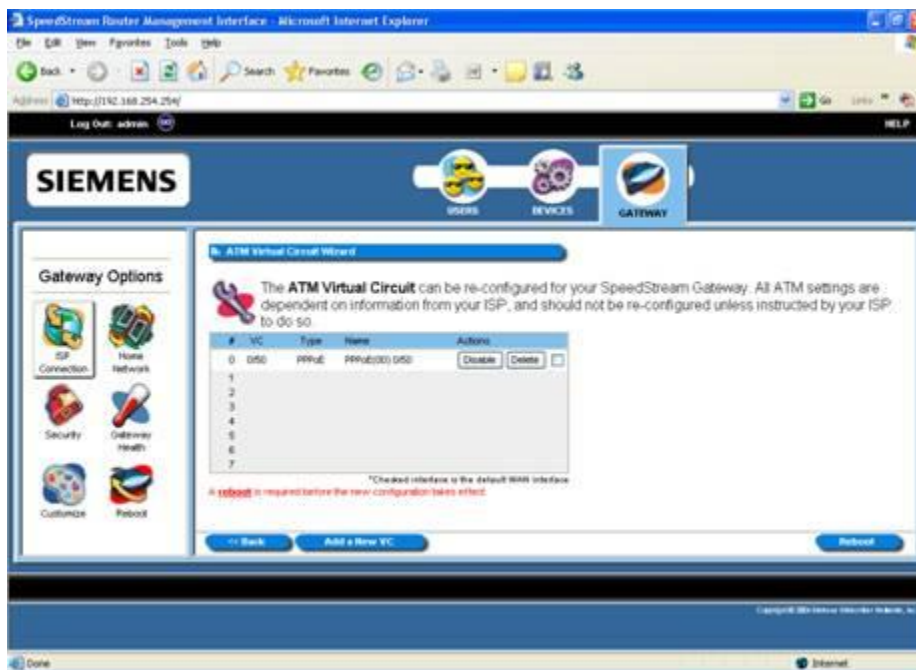
23. Click Next.



24. Click Finish.



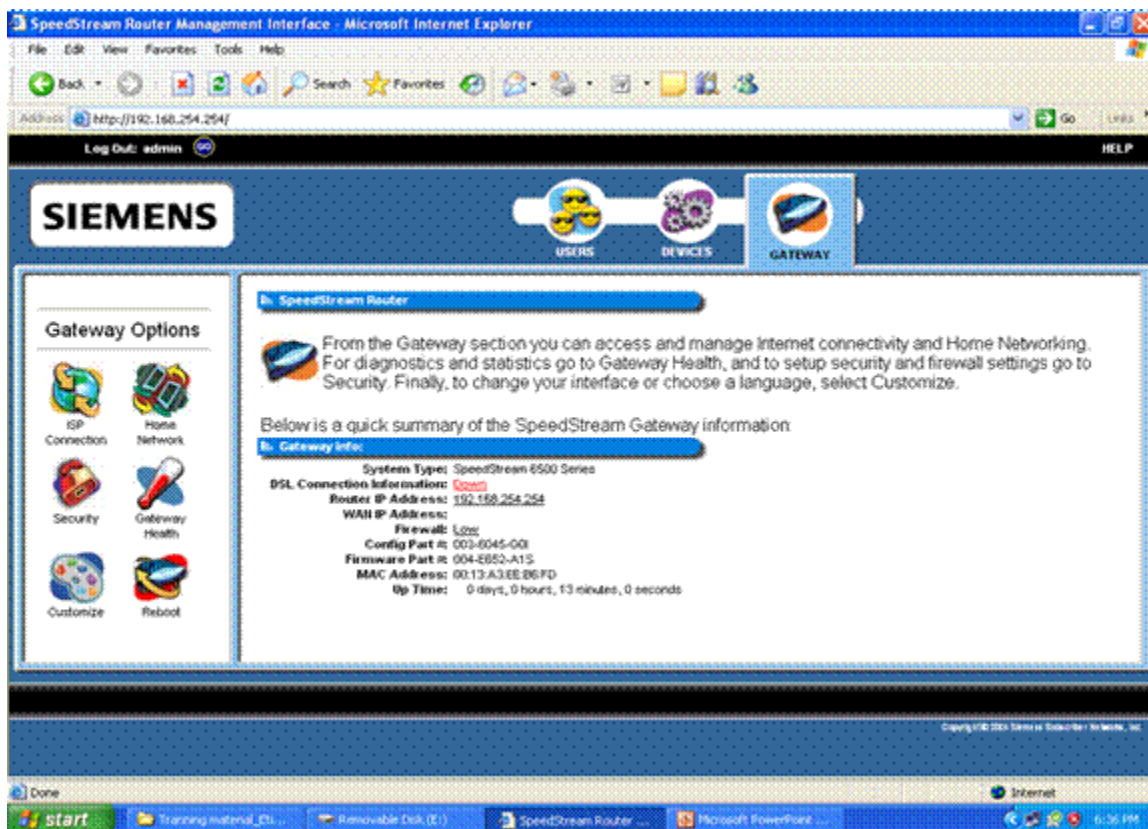
25. Click Reboot.



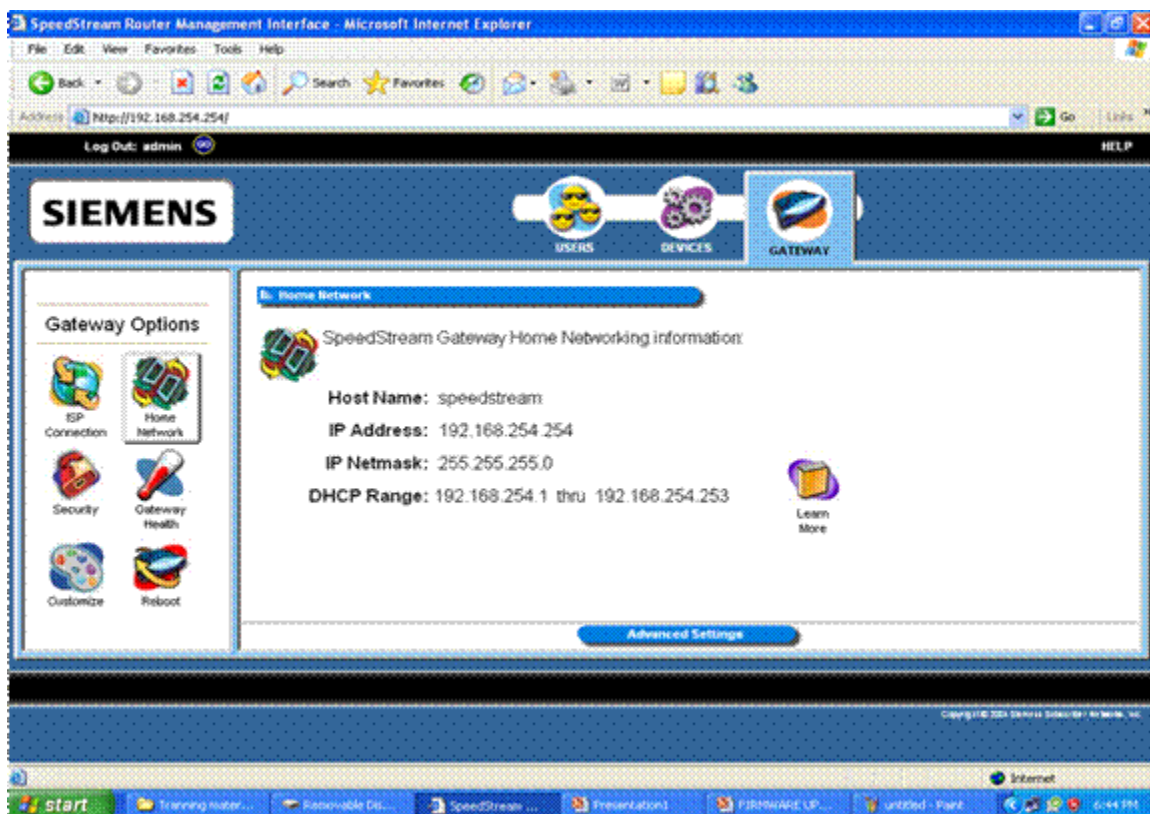
26. Click on Reboot again.
27. Router is ready for PPPoE connection.

Siemens SE568/ SpeedStream 6520 (GPON Network)

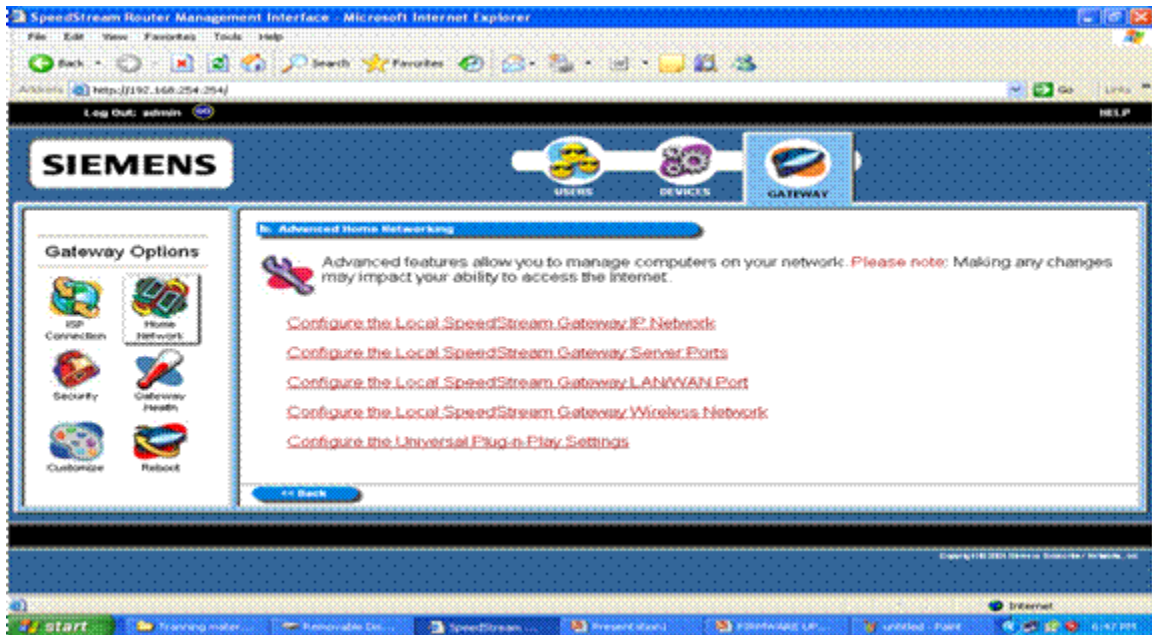
1. Click "Home Network".



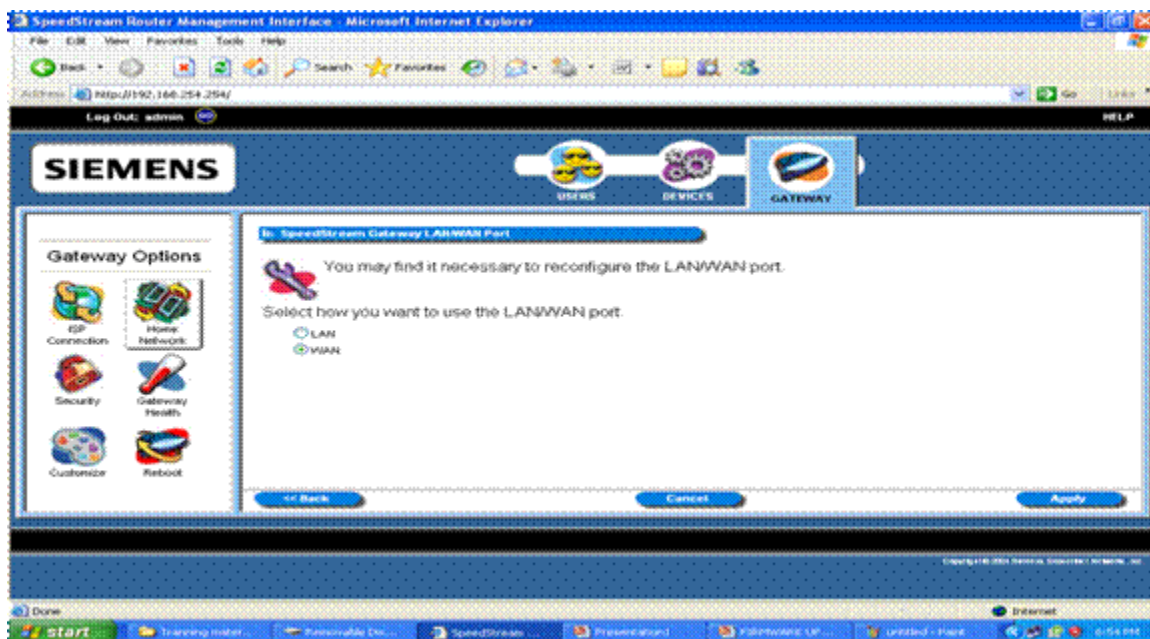
2. Click "Advanced Settings".



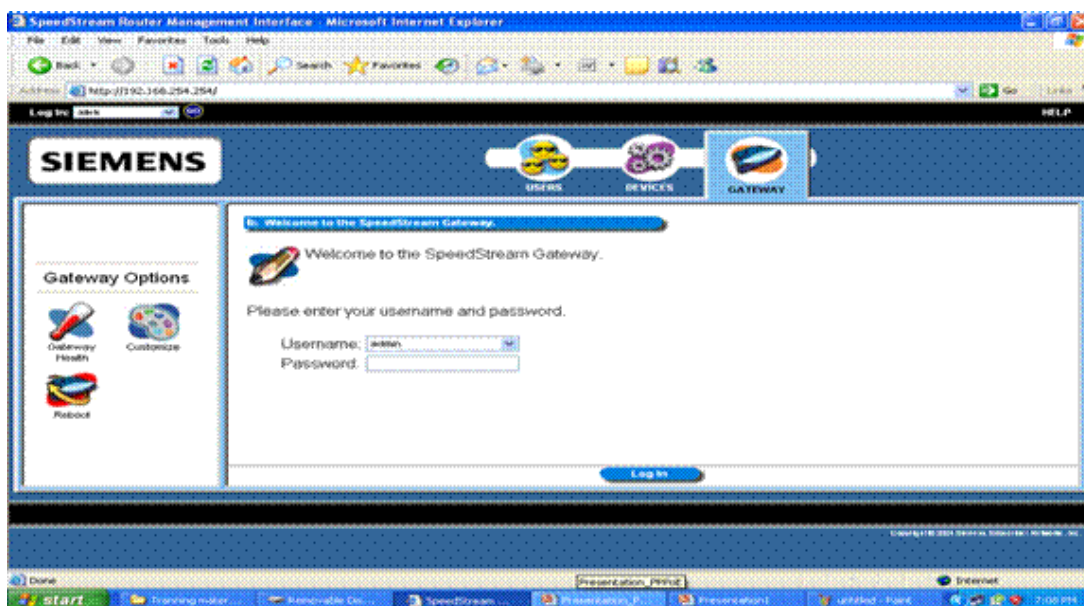
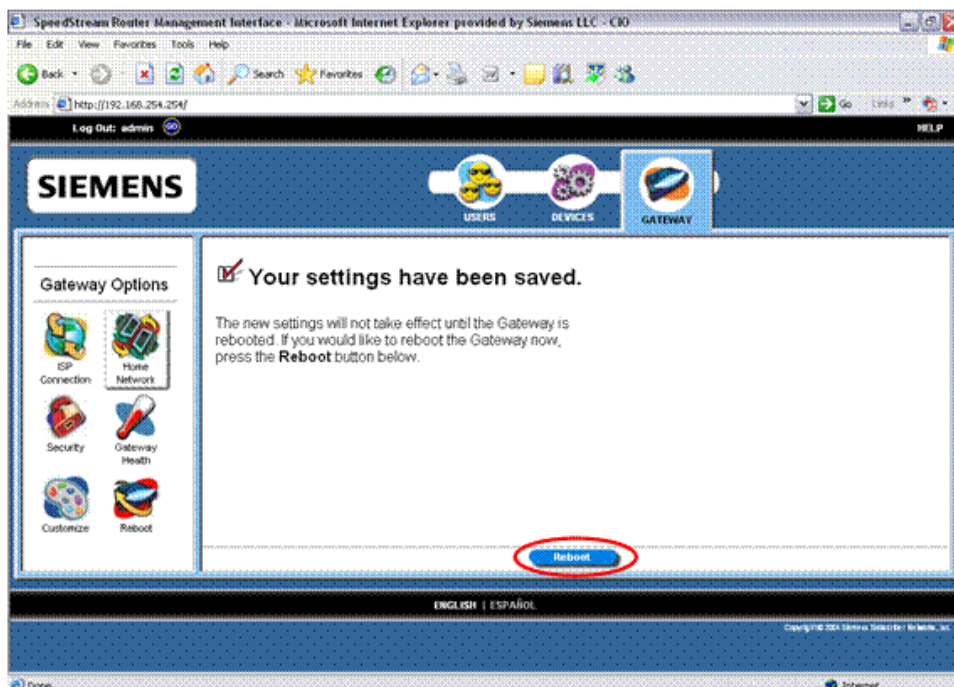
3. Click on “Configure the local SpeedStream LAN/WAN Port”.



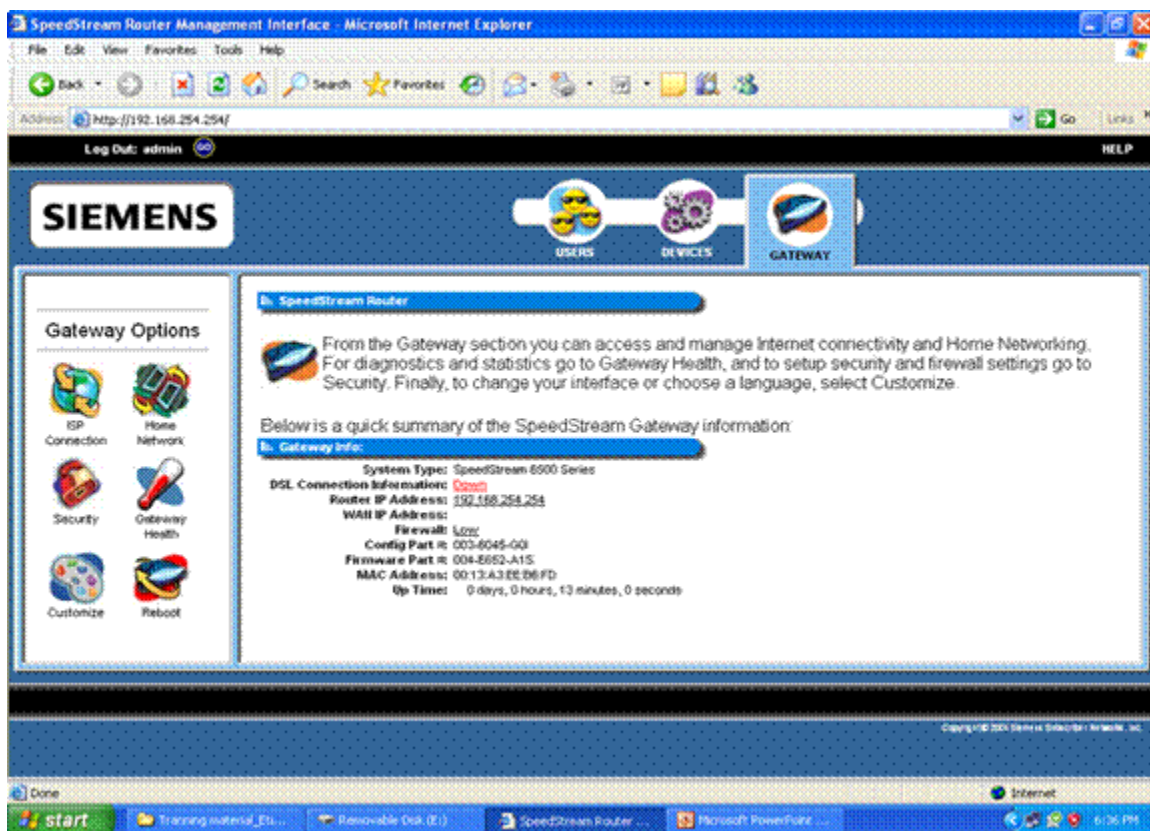
4. Select "WAN".
5. Click "Apply".



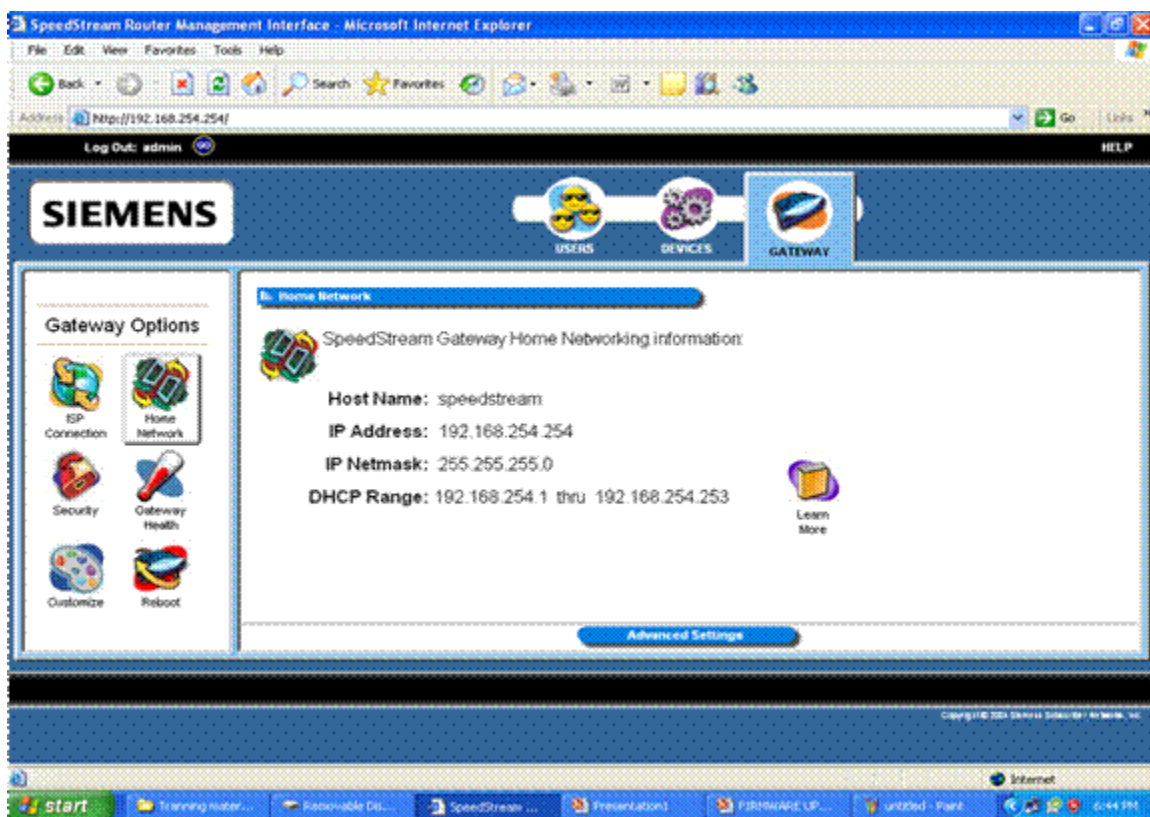
6. Click Reboot to save the settings & restart the modem.
7. After the modem has restarted, enter the password as admin & click on Log In to log into the router.
8. If you do not see this page then click on the Go button on the top left corner to login.



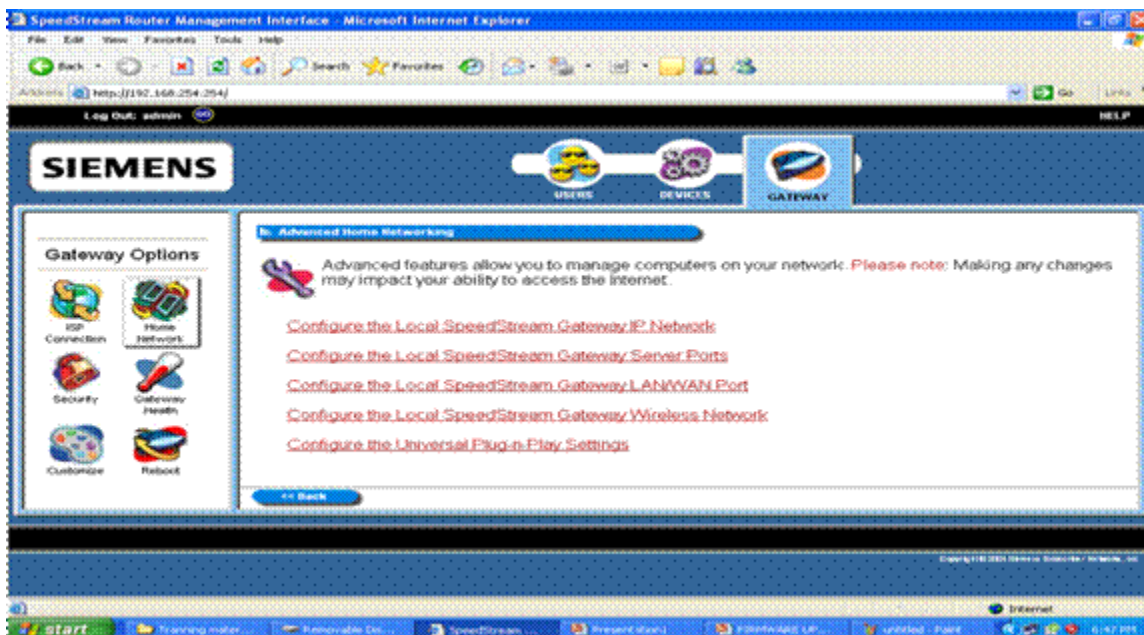
- Click Home Network.



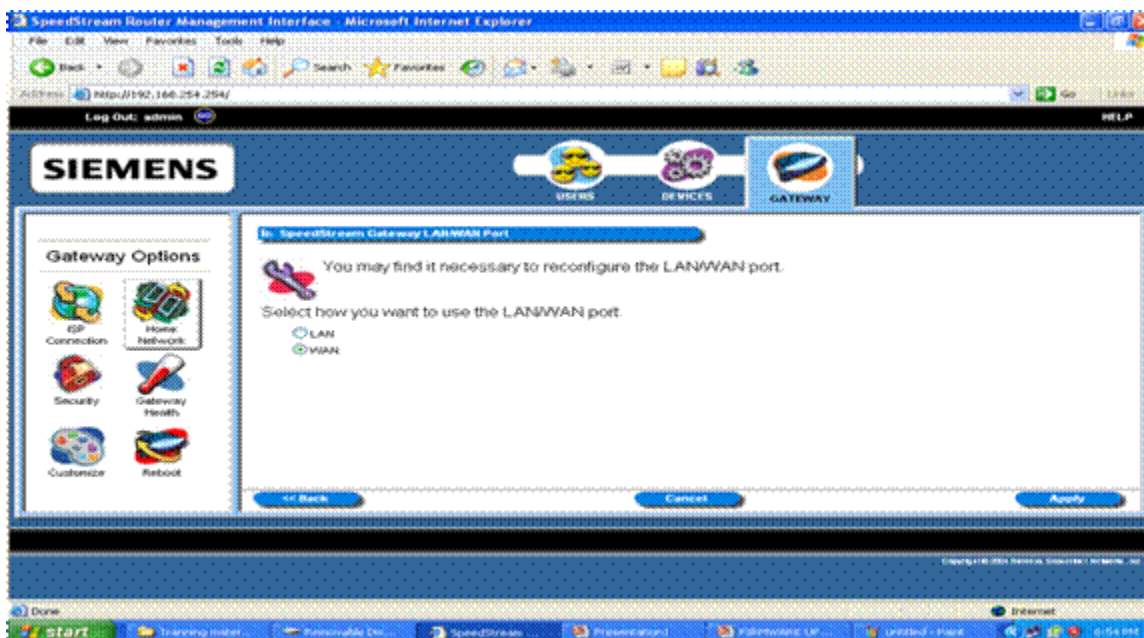
10. Click Advanced Settings.



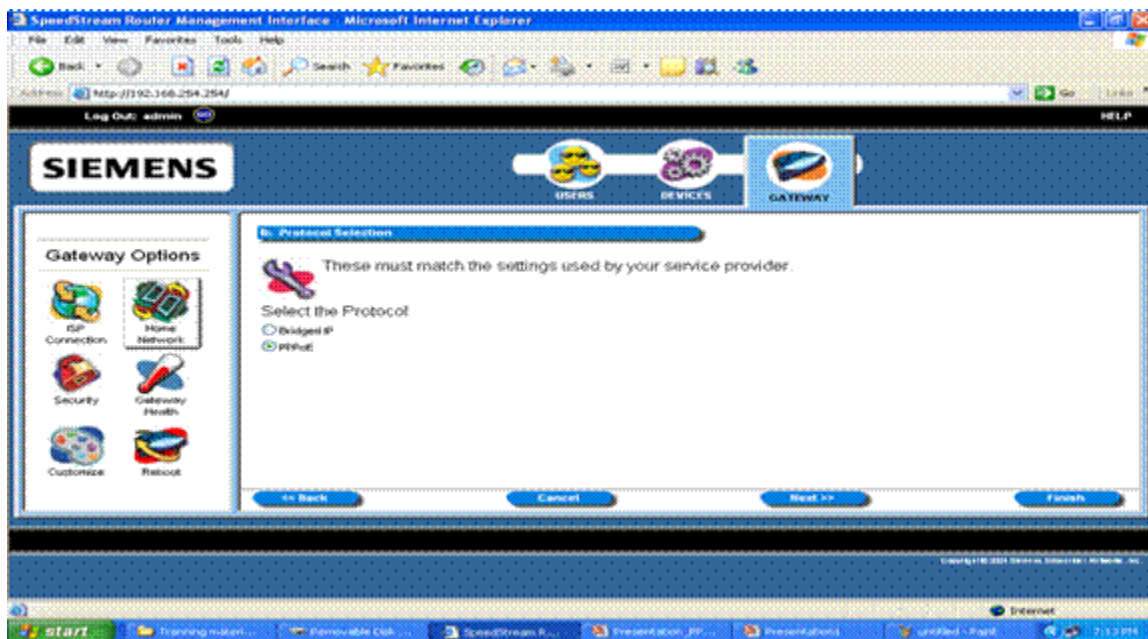
11. Click “Configure the Local SpeedStream Gateway” LAN/WAN port.



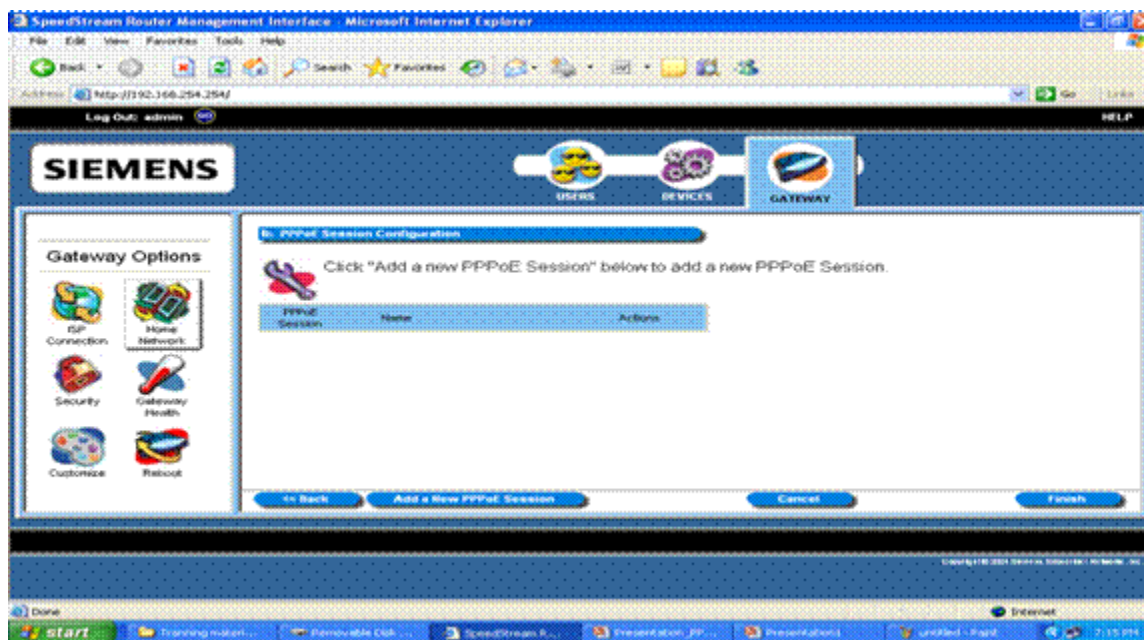
11. Select WAN.
12. Click Apply.



13. Select the Protocol as PPPoE
14. Click Next.

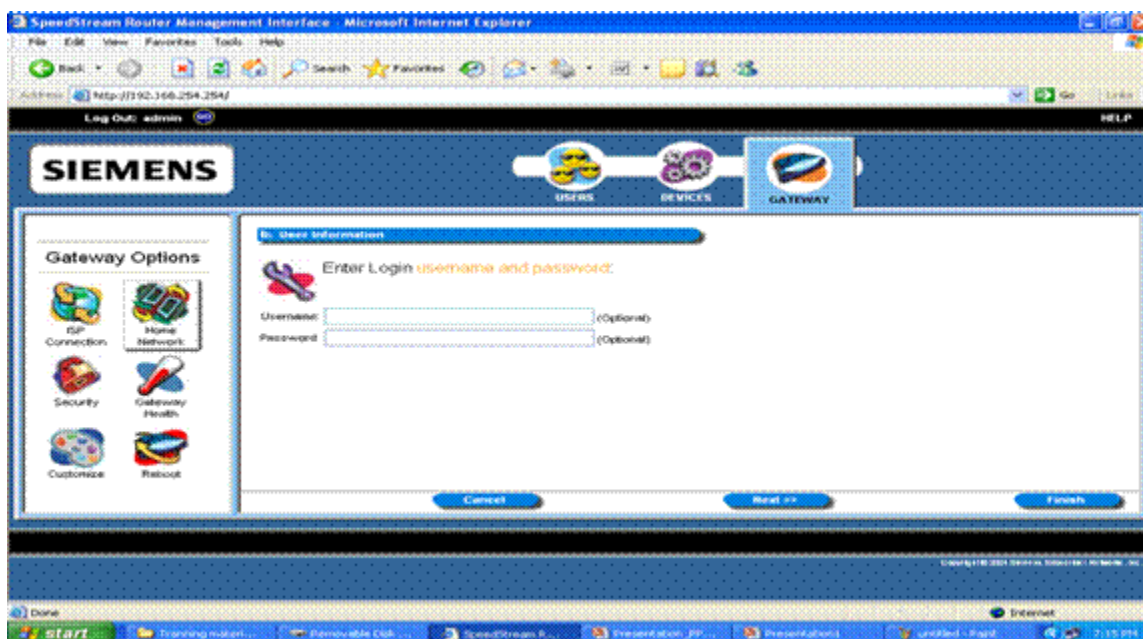


15. Click Add a New PPPoE session to make a new connection...

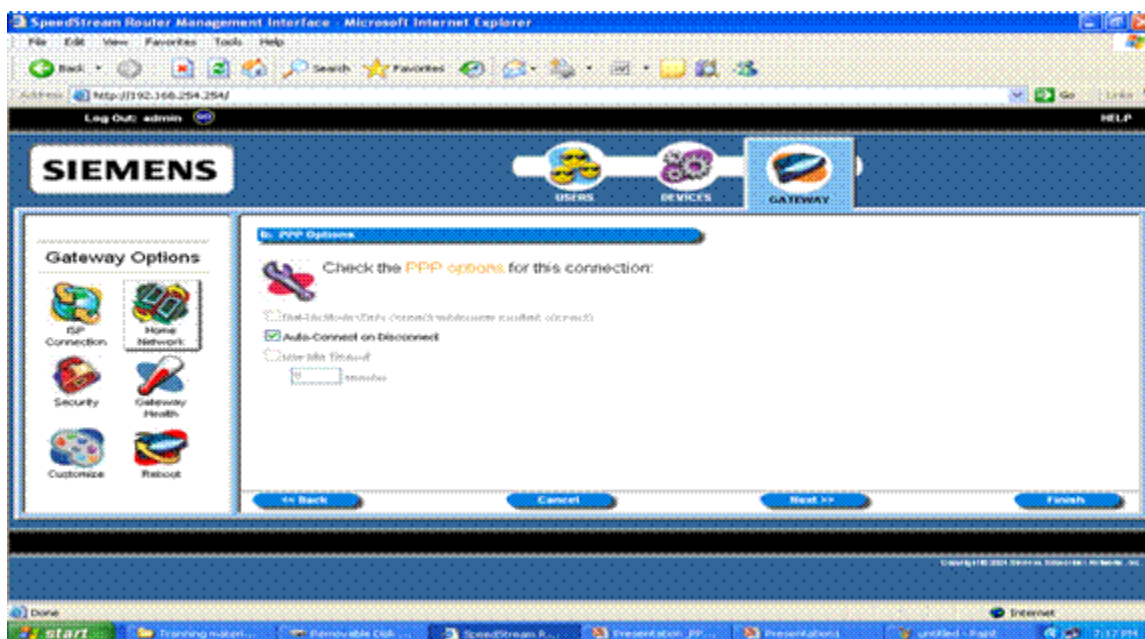


16. Enter the AlShamil UserID & Password.

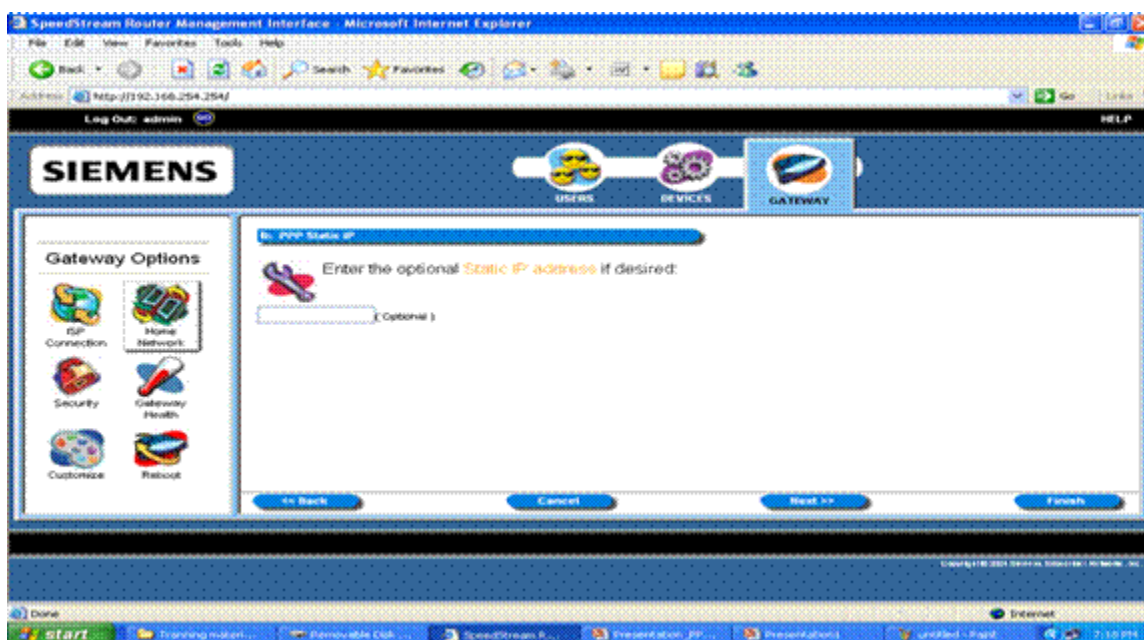
17. Click on Next.



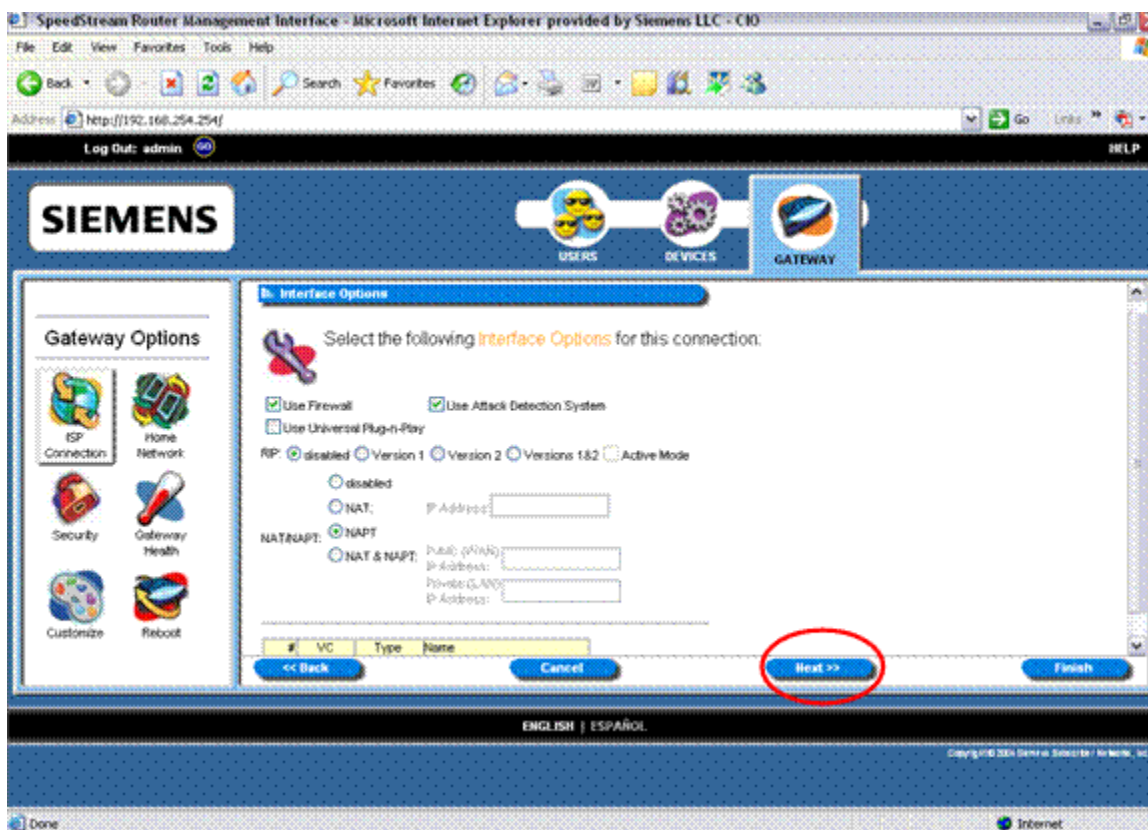
18. Select Auto Connect on Disconnect.
19. Click Next.



20. Click Next again.



21. Uncheck Use Firewall.
22. Check Use Universal Plug-n-Play.
23. Click Next.



24. Click Reboot to restart.

25. After restarting, the router should be ready for use.

